



SOLUTIONS OFFERING

Daikin Applied HVAC Systems



Perfecting The Air We Share 

LEARN MORE AT [DAIKINAPPLIED.COM](https://www.daikinapplied.com)

THE WORLD'S LEADING INNOVATOR IN HVAC

EXCELLENCE FOR OVER 100 YEARS



WHO WE ARE

Daikin Industries, Ltd. is a Forbes 1000 global company with revenues of over \$32 billion and more than 99,000 employees worldwide, making us the world's number one air-conditioning company. Daikin is engaged in the development, manufacturing, sales and aftermarket support of heating, ventilation, air conditioning and refrigeration (HVACR) equipment, refrigerants and other chemicals, as well as oil hydraulic products.

THE INDUSTRY LEADER IN ENVIRONMENTAL SOLUTIONS

We are strongly committed to protecting the health and safety of people while finding sustainable solutions to lead the industry. As an HVAC leader, we recognize the unique opportunity to make a difference in environmental initiatives while educating the next generation to improve efficiencies and create a more sustainable world for all. Our products save energy, reduce environmental impact and help facilities earn points toward LEED® certification with Environmental Product Declaration (EPD®) verification.

As our HVAC technologies advance global standards for sustainability, it is equally important to ensure our processes do too. Our organization is home to a total of eight ISO 14001 certified sites, demonstrating the use of strong and verifiable environmental management systems (EMS) and further supporting our unwavering commitment to environmental stewardship.





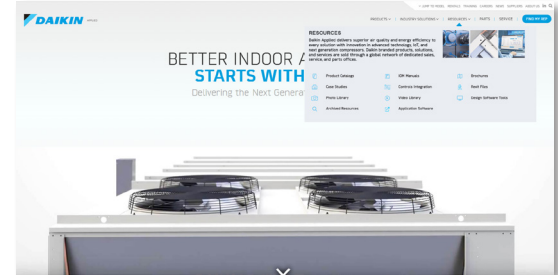
PRODUCT INDEX



| | | |
|---|--|-----------|
|  | Rooftops | 8 |
|  | Condensing Systems | 11 |
|  | Self-Contained | 13 |
|  | Coils | 14 |
|  | Air Handlers | 16 |
|  | Unit Heaters/Fan Coils | 20 |
|  | Variable Air Volume | 23 |
|  | Water Source Heat Pumps | 24 |
|  | Unit Ventilators | 27 |
|  | Water-Cooled Chillers | 30 |
|  | Modular Solutions | 34 |
|  | Air-Cooled Chillers | 35 |
|  | SiteLine™ Building Controls | 37 |

DAIKINAPPLIED.COM

Daikin Applied's official website serves as a library of resources, including our product information, catalogs, manuals, brochures and more.



Product Catalogs



IM/OM Manuals



Brochures



Case Studies



Controls Integration



Design Software Tools



Photo Library



Video Library



Application Software



Archived Resources

SERVICES & OFFERINGS

DAIKIN 360: INTEGRATED SERVICE SOLUTIONS:

Your building is one of your company's most significant investments and is a cornerstone of growth and success. Our HVAC experts can help make your building your second-best employee by creating an ideal environment with quality air that propels your people and customers forward. Daikin 360 service solutions can help by keeping your current systems up and running with comprehensive maintenance, repair services, system replacements and quality HVAC replacement parts to make your HVAC system and facilities best-in-class. daikinapplied.com/services



Maximize the Life of Your System



Upgrade and Modernize



Achieve Best-in-Class Facilities



DAIKIN 360 REPLACEMENT PARTS: NO TIME FOR DOWNTIME

When you need OEM or generic parts to repair your HVAC system, you likely need them quickly. Daikin has an expansive inventory and centralized parts distribution centers in Dayton, Ohio and Reno, Nevada to get the right parts to you faster than ever before. To mitigate downtime, we have over 80 locations (and counting) throughout North America. daikinapplied.com/parts



DAIKIN 360 RENTAL EQUIPMENT: WEATHER THE UNEXPECTED

Planning for “what ifs” can be a real game changer for building owners, facility engineers and facility managers, not to mention grappling with actual heating and cooling emergencies. Proper contingency planning with Daikin 360 can solve both of your long- and short-term HVAC needs.

Daikin 360 rentals deliver chillers, dehumidifiers, heat and power solutions, as well as applications expertise and responsive support. Our rental chillers and temporary cooling capabilities are at your call 24/7 throughout the United States and Canada. We offer a comprehensive package with your rental chiller, including pumps, flexible water piping connections and electrical hookups.

daikinapplied.com/rentals



SOLUTIONS PLAZA: INTERACTIVE INNOVATION

Occupying the 21st floor of the Exchange Place Centre in New Jersey, our Solutions Plaza allows visitors to explore Daikin's new technologies firsthand with our high-tech showroom containing our latest HVAC products and technologies. Solutions Plaza gives engineers, owners, contractors, architects and customers the knowledge they need to have confidence in their buying decisions. With customized customer visits, remote witness testing, continuing education seminars, industry meetings and more, Solutions Plaza is the perfect way to make a lasting impact.

daikinapplied.com/industry-solutions/solutions-plaza



APPLIED DEVELOPMENT CENTER: TESTING FACILITY FOR GLOBAL APPLIED R&D

Daikin's Applied Development Center (ADC) exemplifies the future of HVAC technology where innovation meets sustainability. As the facility grows and continues to explore new frontiers in energy efficiency, it sets a benchmark for the industry and plays a vital role in the global effort to combat climate change. Through groundbreaking research and development, Daikin is not just shaping the future of HVAC; it is actively working towards a more sustainable planet.



DAIKIN LEARNING: FROM INDUSTRY PROFESSIONALS TO YOU

Daikin Learning is more than just a training program; it is a strategic initiative that transforms how we educate and empower our customers. By providing modern, technology-enabled learning experiences we are driving business value and fostering excellence in the HVAC industry. Together, we will shape the future of HVAC training and service, ensuring that every technician is equipped with the knowledge and skills to succeed. daikinapplied.com/training



EXCELLENCE IN HVAC TRAINING



NATIONAL ACCOUNTS:

In today's fast-paced business environment, managing your HVAC systems efficiently is crucial for operational success. As a Daikin Applied National Account, you gain access to a dedicated HVAC expert who not only understands your systems, but also aligns with your business priorities. This partnership is designed to streamline your HVAC management, saving you both time and money.

Our National Accounts team provides specialized expertise in market segments such as healthcare, K-12 and higher education, retail/grocery, data centers, logistics, manufacturing, hospitality, offices and also local, state and federal government. nationalaccounts@daikinapplied.com



COOPERATIVE PURCHASING: POWER IN PARTNERSHIP

Cooperative purchasing networks provide a vital framework for organizations seeking to ensure compliance while optimizing their procurement processes. By fostering competitive bidding and facilitating access to leading technology solutions, these networks empower organizations to achieve their goals more effectively and sustainably. Participants have access to our full scope of advanced technology solutions, commercial HVAC systems, as well as comprehensive HVAC services and turnkey solutions.

DAIKIN APPLIED BUILDING SERVICES

As a Daikin Applied National Account, you have priority access to our Daikin 360 portfolio of offerings, which includes:

- > Preventive Maintenance Agreements & Plans
- > Building Optimization
- > Energy Savings Evaluations
- > Equipment Replacement Analysis
- > Indoor Air Quality (IAQ) Analysis
- > On-Site Training
- > Systems Evaluation
- > Rental Solutions
- > Turnkey Equipment Replacement

ROOFTOPS

ADVANCED TECHNOLOGIES. UNPARALLELED PERFORMANCE

Daikin Applied's innovative rooftop systems deliver quality, treated air for commercial buildings. Our offerings include scalable solutions with capacities ranging from 3-31 tons for light commercial applications, 26-75 tons for commercial needs and 20-150 tons for industrial systems.



APPLICATIONS

- ▶ HEALTHCARE
- ▶ OFFICE BUILDINGS
- ▶ SCHOOLS
- ▶ MANUFACTURING
- ▶ HOSPITALITY

NAME/MODEL:

REBEL®
DPS
Light Commercial



3-31 ton

MAVERICK® II
MPS
Commercial



30-50 ton

REBEL APPLIED®
DHSA
Packaged/Heat Pump



30-68 ton

REBEL APPLIED®
DPSA
Packaged



20-160 ton



MODEL DPS

COOLING & HEAT PUMP REBEL®

With Rebel's cutting-edge technologies and low global warming potential (GWP) R-32 refrigerant, you'll help remove reliance on fossil fuel, lessen carbon footprint and support environmental initiatives – all while achieving astounding energy savings of up to 55% above ASHRAE standards.



PERFORMANCE

- Cooling and heat pump
- 3-31 tons
- Up to 10,500 cfm
- Low-GWP R-32
- 22.7 IEER

FEATURES

- > Variable speed inverter compressor
- > Direct expansion (DX) heat pump
- > 100% dedicated outdoor air system (DOAS)
- > Electric preheat option
- > DD variable speed EC or VFD fan motors

PERFORMANCE

- Heating and cooling
- 30-50 tons
- 12,000-20,000 cfm
- Low-GWP R-32
- 10.0+ IEER

FEATURES

- > Variable or constant air volume operation
- > Energy recovery
- > Double-wall construction with access doors
- > Gas heat with staged or modulating control
- > ECM exhaust fans
- > Scroll compressors

MODEL MPS

HEATING & COOLING MAVERICK® II

Maverick II systems with low-GWP R-32 refrigerant are designed for new, retrofit or replacement applications on commercial buildings. Arriving as a complete packaged solution, Maverick II systems maximize your design and installed cost savings with a wide range of factory-installed options.



MODEL DHSA

HEAT PUMP & COOLING REBEL APPLIED®

Rebel Applied's direct expansion and heat pump capability will revolutionize your buildings climate control need with precise temperature control, exceptional efficiency and cost savings, regardless of weather conditions.



PERFORMANCE

- Heat pump and cooling
- 30-68 tons
- 12,000-27,200 cfm
- Low-GWP R-32
- Up to 20.0 IEER

FEATURES

- > 100% outdoor air, energy recovery options
- > R-13 rated double-wall panels, thermal break
- > Low-leakage casing, up to 5" of static pressure
- > Inverter compressors, fan array, ECM fans

MODELS DPSA

HEATING & COOLING REBEL APPLIED®

Rebel Applied is an innovative rooftop solution that redefines industry standards. Our all-encompassing design prioritizes high performance and exceptional energy efficiency, ensuring the lowest lifecycle cost for your projects. With unlimited configurability, engineers and contractors can tailor designs to meet the specific needs of both new construction and retrofit applications.



PERFORMANCE

- Heating and cooling
- 20-160 tons
- 5,000-45,000 cfm
- Low-GWP R-32
- Up to 20.0 IEER

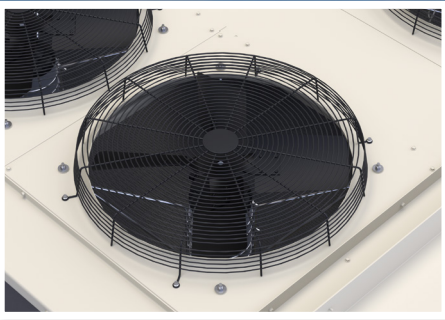
FEATURES

- > Heat pump configuration
- > Inverter compressors, fan array, ECM fans
- > R-13 rated double-wall panels, thermal break
- > Direct replacement for RPS & Intellipak™
- > Configurable power supply to match electrical requirements
- > Highly optioned

CONDENSING SYSTEMS

SOLUTIONS TO MATCH YOUR PRIORITY

Daikin condensing systems with R-32 refrigerant and inverter scroll compressor technology adjust their speed based on the cooling or heating demand and operate at variable capacities rather than traditional fixed speeds. This allows for precise temperature control to meet part-load conditions, reduces energy bills and lowers global warming potential.



APPLICATIONS

- ▶ DATA CENTERS
- ▶ HEALTHCARE
- ▶ OFFICE BUILDINGS
- ▶ SCHOOLS
- ▶ MANUFACTURING
- ▶ RETAIL



NAME/MODEL:

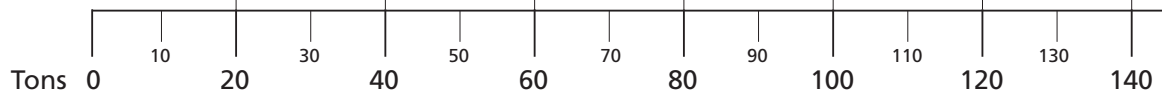
**APPLIED
SPLIT SYSTEM**
DCSA
R-32 Air-cooled

20-75 ton



**APPLIED
SPLIT SYSTEM**
RCS
R-410A Air-cooled

15-140 ton



MODEL DCSA

R-32

APPLIED SPLIT SYSTEM

Ideal for cooling large spaces, Daikin Applied condensing units efficiently manage heat removal even in the most demanding of conditions, making them the ideal choice for maintaining optimal temperatures in large spaces and industrial facilities.



R32
LOW-GWP
REFRIGERANT

PERFORMANCE

- Operates down to -10°F
- 20-75 tons
- Head pressure control
- 2 refrig. circuits
- Up to 19.4 IEER

FEATURES

- > Isolation/relief valves, refrig. pressure ports
- > ECM fans, quiet condenser fan blades
- > Staged or variable speed compressors
- > MicroTech® controls
- > 208, 230, 460 & 575V, Field-GFI outlet

MODEL RCS

R-410A

APPLIED SPLIT SYSTEM

Designed for replacement projects and specific data center building applications, these quiet systems with energy efficient operation meet ASHRAE 90.1 efficiency requirements and can be paired with Daikin Applied air handlers and coils.



PERFORMANCE

- Operates down to 0°F
- 15-140 tons
- Head pressure control
- 2 refrig. circuits
- Up to 15.4 EER

FEATURES

- > Micro-channel condenser coils
- > Redundant dual refrigerant circuits
- > Quiet condenser fans
- > Multiple stages of capacity control
- > Designed for replacements & data centers

SELF-CONTAINED SYSTEMS

ADVANCED TECHNOLOGIES. UNPARALLELED PERFORMANCE

Self-contained systems present innovative packaged HVAC solutions designed to meet the diverse needs of modern facilities. These packaged systems feature low-global warming potential (GWP) R-32 refrigerant to meet sustainability goals, modular design flexibility to install easily through narrow doors and hallways, and single-point power with optimized factory controls that create for fast, seamless start-up and operation.



APPLICATIONS

- ▶ HEALTHCARE
- ▶ OFFICE BUILDINGS
- ▶ SCHOOLS
- ▶ MANUFACTURING
- ▶ HOSPITALITY

MODEL SWP-J

NEW/RETROFIT CONSTRUCTION SELF-CONTAINED

Model SWP-J can be built and shipped as a complete system or in module form to fit into freight elevators and through narrow passages and doorways. This modular system allows for quick navigability and installation for applications calling for direct expansion (DX) cooling, chilled water cooling, electric heat or hot water heat.

PERFORMANCE

- ☀ Heating and cooling
- ❄ Size 23-99 (30-115 tons)
- 🌀 6,000-32,000 cfm
- 🧴 Low-GWP R-32
- 🕒 16.5 avg. AHRI EER

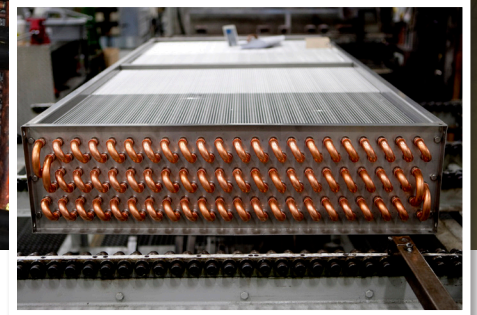
FEATURES

- Efficient, direct-drive ECM fan array
- Multiple, high-efficiency scroll compressors
- MicroTech® controls
- Filtration options for improved IAQ
- Modular design, quiet 2" double-wall panels
- Deep evaporator coils maximize energy savings



COILS

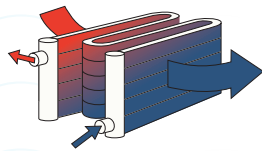
Daikin coils offer the widest variety of materials, physical sizes, fin spacings, row depths and circuiting. Our Hi-F (high-efficiency) fins maximize heat transfer with fewer fins to lower your initial cost and our E-F (energy-efficient) fins save energy by reducing air pressure drop as much as 33%, while also minimizing fan brake horsepower requirements.



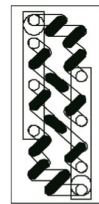
NAME/MODEL:

CHILLED WATER

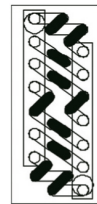
5WQ/5MH/5MS/5WH/5WS/
5WM/5WD



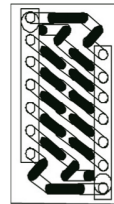
5WQ



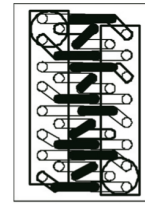
5WH



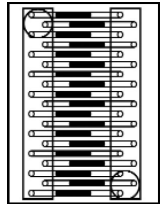
5WL



5WS



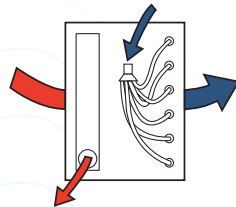
5WM



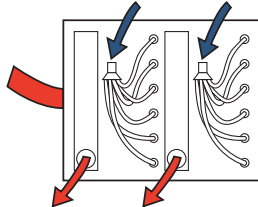
5WD

EVAPORATOR

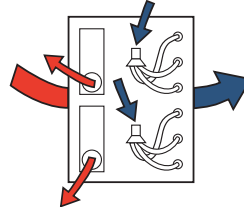
5EN/5EF/5ER/5EJ/5EK



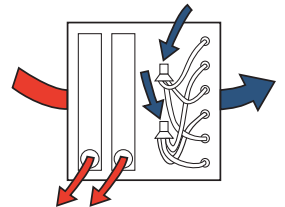
5EN



5ER



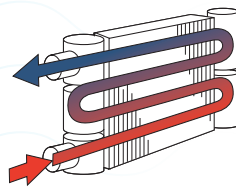
5EF



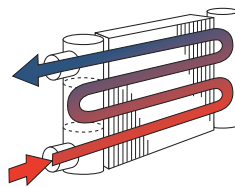
5EJ/5EK

HOT WATER

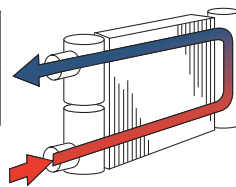
5MQ/5MH/5MS/5WB/5WQ/5WH/
5WL/5WS/5WM/5WD



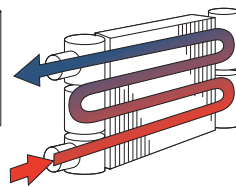
5MQ



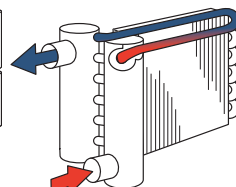
5WH



5WH



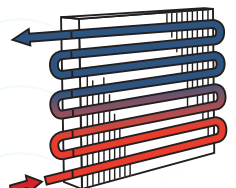
5WS



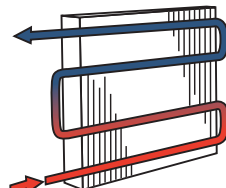
5MQ/5MH/5MS

BOOSTER

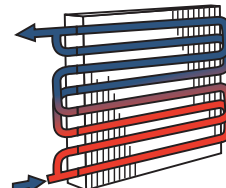
5BS/5BSB/5BD



5BS



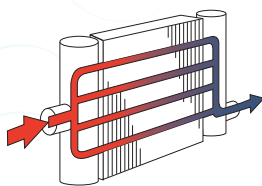
5BSB



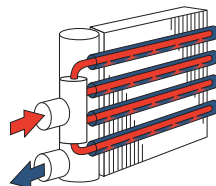
5BD

STEAM

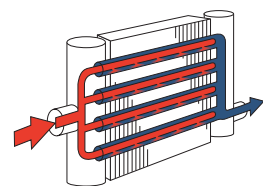
5SA/5HA/5JA/5GA/
8JA/8GA/8RA/8TA



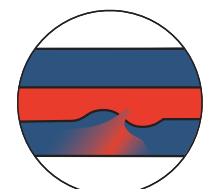
5SA/5HA



5JA/5GA/8JA/8GA



8RA/8TA

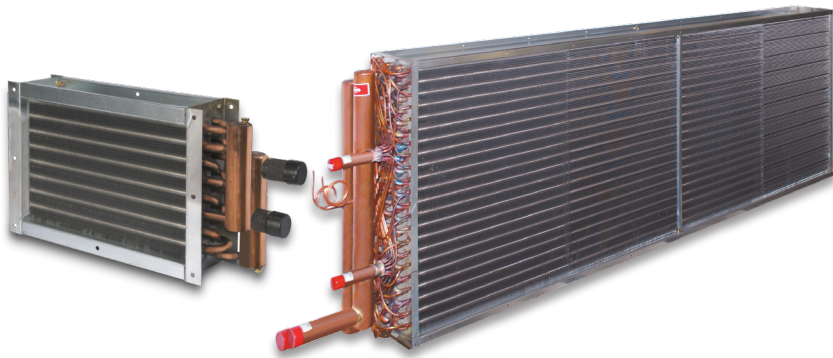


Directional orifice

FINS HI-F5/E-F5

WATER COOLING/ EVAPORATIVE

Designed for use with chilled or well water, cooling coils are ideal for comfort cooling, process integration, dehumidification and special applications. Evaporative coils deliver maximum heat transfer under all operating conditions, ensuring you stay cool and comfortable year round, no matter the climate.



PERFORMANCE

- 300°F maximum
- 2-12 rows
- Up to 200 psig
- 5/8" copper tubing
- Up to 14 fins per inch

FEATURES

- > AHRI Standard 410 certified
- > Staggered design for increased cooling
- > Factory leak tested at 315 psig
- > Vents & drains on all water coils

PERFORMANCE

- 400°F maximum
- 1-12 rows
- Up to 250 psig
- 5/8" and 1" copper tubing
- Up to 14 fins per inch

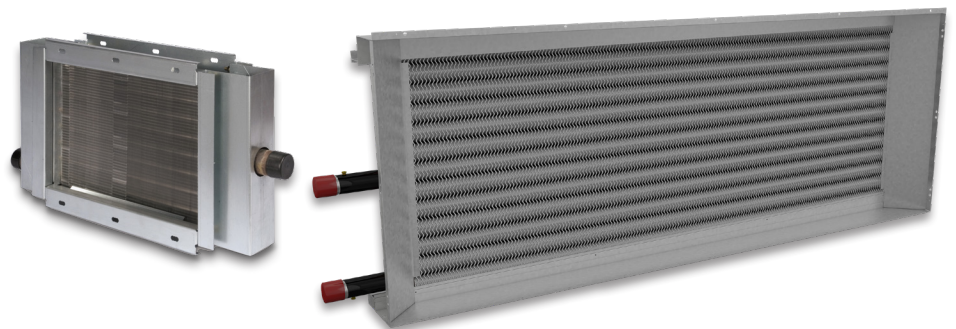
FEATURES

- > AHRI Standard 410 certified
- > Staggered design for increased heating
- > Factory leak tested at 315 psig
- > Vents and drains on all water coils
- > Brazed copper tubes to copper header joint

FINS HI-F5/HI-F8/E-F5

WATER HEATING/ BOOSTER/STEAM

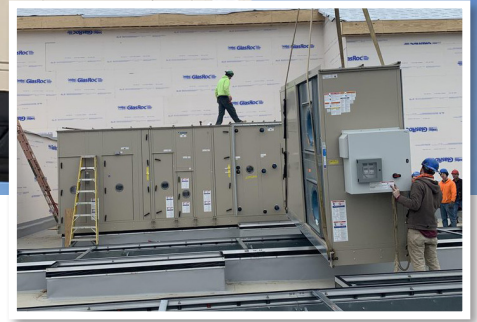
Heating coils produce high capacities with limited water quantities, while booster coils are designed for use in reheat applications in constrained spaces. Our interchangeable steam coils with optimal fin design serve both general and special-purpose applications with high-performing heat transfer capabilities.



AIR HANDLERS

COMPLETE, ULTIMATE FLEXIBILITY

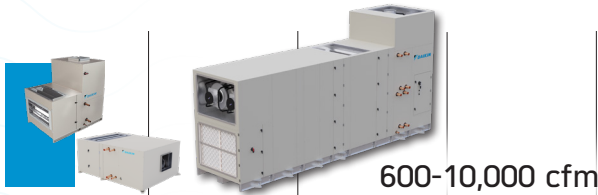
Daikin Applied indoor and outdoor air handlers are used to condition and circulate large volumes of air throughout a space via ductwork and are part of a system using either a chiller with cooled water or a condensing unit in a direct expansion (DX) system.



NAME/MODEL:

PRECISELINE®

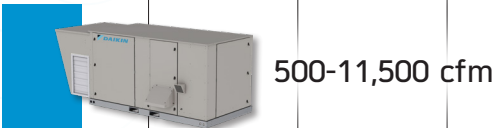
BCH/BCA/BCV
Indoor



600-10,000 cfm

REBEL®

DAH
Outdoor Chilled Water



500-11,500 cfm

REBEL APPLIED®

DAHA
Outdoor



3,000-35,000 cfm

SKYLINE®

OAC/OAH
Outdoor



900-51,000 cfm

VISION®

CAC/CAH
Indoor



900-84,500 cfm

Custom

CAC/CAH/OAC/OAH
Indoor/Outdoor



900-84,500 cfm



APPLICATIONS

- ▶ HEALTHCARE
- ▶ OFFICE BUILDINGS
- ▶ SCHOOLS
- ▶ MUSEUMS
- ▶ GOVERNMENT

MODELS BCV/BCA/BCH

INDOOR PRECISELINE®

PreciseLine's compact vertical and horizontal configurations give system designers and contractors unmatched design capability when faced with tight space restrictions.



PERFORMANCE

- ❄️ R-6.5 thermal value
- ❄️ 006-100 sizes
- 🌀 600-10,000 cfm
- ⚡ .5-133 kW elect. heat
- 🌀 MERV 8 or 13 filtration

FEATURES

- Factory-installed controls/valve/piping
- DX coils, DOAS/VRV integration
- 1" double wall foam, thermal break cabinet
- Economizer mixing box
- Energy recovery wheel

PERFORMANCE

- ❄️ R-13 thermal value
- ❄️ 003-021 sizes
- 🌀 500-11,500 cfm
- ⚡ 6-140 kW elect. heat
- 🌀 30% more efficiency

FEATURES

- Variable speed ECM fan motors
- Drive forward curved or plenum fans
- Optional factory-installed valves
- Quiet, double-wall foam cabinet
- 2" and 4" filter racks

MODEL DAH

OUTDOOR CHILLED WATER REBEL®

When combined with Daikin Applied air-cooled chillers, Rebel offers engineers and building owners a chilled water solution featuring technologies that provide for a complete single-sourced system.



MODEL DAHA

OUTDOOR REBEL APPLIED®

Rebel Applied air handlers are high-performance, customizable units, known for their energy efficiency, design flexibility and advanced features. DAHA models are engineered to provide precise temperature and humidity control, making them suitable for all types of commercial or industrial building applications.



PERFORMANCE

- ☀️ R-13 thermal value
- ❄️ 024-059 sizes
- 🌀 3,000-35,000 cfm
- 🌀 Blow/draw-through coils
- 🌀 MERV 8-16 filtration

FEATURES

- Energy recovery, fan array, ECM fans
- Compatible with Daikin chillers & other systems
- Configurable power supply to match electrical requirements
- Quiet operation
- Precise temperature & humidity control

MODELS OAC/OAH

OUTDOOR SKYLINE®/CUSTOM

Skyline's modular construction platform features 2-inch incremental dimensioning that gives engineers unlimited design capabilities to incorporate valuable features and options into the air handler that specifically match application requirements.



PERFORMANCE

- ☀️ R-13 thermal value
- ❄️ 003-090 sizes
- 🌀 900-51,000 cfm
- 🌀 Blow/draw-through coils
- 🌀 MERV 8-17 filtration

FEATURES

- Gas Phase Air Cleaning Technology
- Space-saving ECM fan array
- Modular flexibility
- Fixed plate or energy recovery wheel
- Factory options for customized flexibility






MODELS CAC/CAH

INDOOR VISION[®]/CUSTOM

Vision meets demands for improved indoor air quality, low sound, high operating efficiency and smaller mechanical rooms with patented construction that provides unequalled thermal efficiencies and low leakage rates.



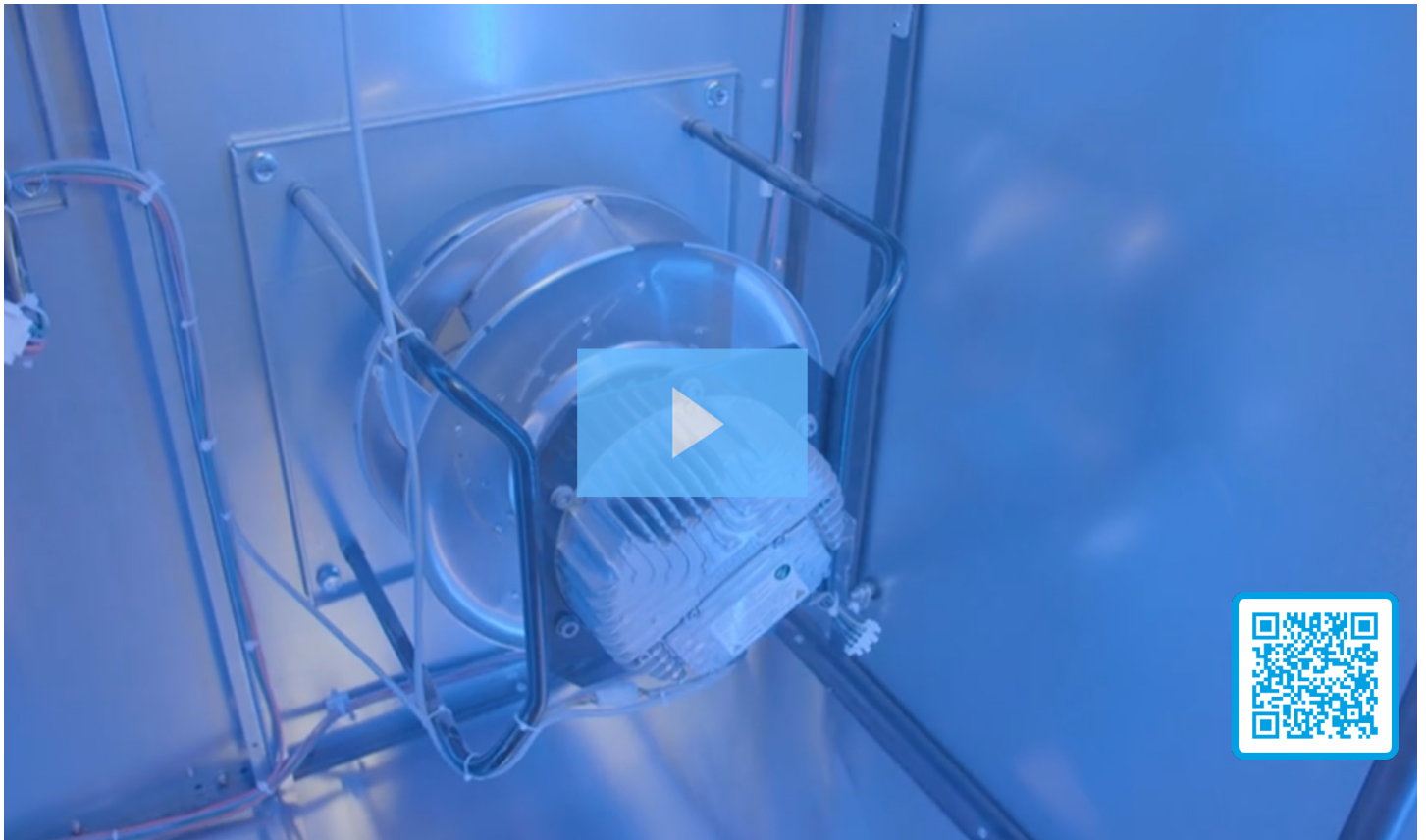
PERFORMANCE

-  R-13 thermal value
-  003-169 sizes
-  900-84,500 cfm
-  Blow/draw-through coils
-  MERV 8-17 filtration

FEATURES

- > Gas Phase Air Cleaning Technology
- > Space-saving ECM fan array
- > Modular flexibility
- > Fixed plate or energy recovery wheel
- > Factory options for customized flexibility

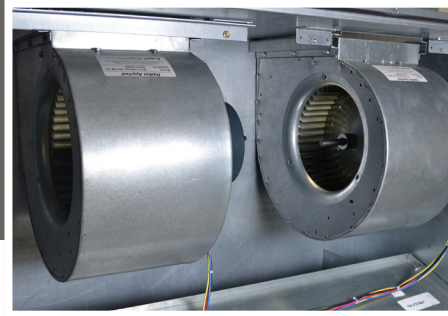
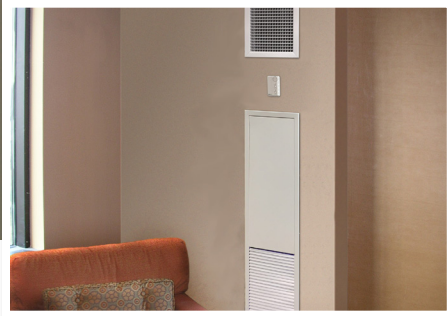
DAIKIN APPLIED AIR HANDLERS



UNIT HEATERS/FAN COILS

PERFORMANCE YOU DEMAND. QUALITY YOU EXPECT.

For over 80 years, Daikin Applied has been the trusted choice for building owners, facility managers, and specifying engineers seeking reliable climate solutions. Our unit heaters and fan coils are engineered to meet and exceed your most demanding requirements, providing tailored options and precise sizing to suit your room application and condition.



NAME/MODEL:

**CABINET
UNIT HEATERS**
UHH/UDH

18-610 Mbh



Mbh 0 200 400 600



APPLICATIONS

- ▶ HOSPITALITY
- ▶ GOVERNMENT
- ▶ HEALTHCARE
- ▶ SCHOOLS
- ▶ OFFICES

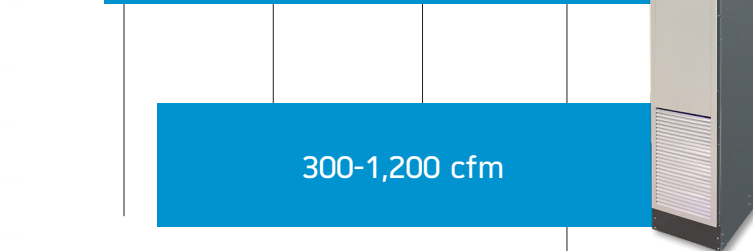
NAME/MODEL:

THINLINE
FCH*/FCV*/FHV*/FHW*/FHH*
Flat/Slope Top, Concealed,
Recessed, Exposed



200-1,200 cfm

OPTILINE™
FSG
Vertical Stacked



300-1,200 cfm

CFM 0 250 500 750 1000 1250 1500

MODELS UHH/UDH

CABINET UNIT HEATERS

Daikin horizontal and vertical cabinet unit heaters provide specifying engineers and facility managers with simple heating solutions for industrial and commercial applications to meet specific heat-throw and heat-spread requirements.



PERFORMANCE

- 18-610 Mbh heating
- 018-610 sizes
- 1/2-6 tons
- 310-12,350 cfm
- Sound class I-VII

FEATURES

- > 1/2" copper coils, aluminum fins
- > 150 psig steam or 220 psig hot water
- > Intermittent or continuous fan
- > Standard 115/60/1 PSC motors

PERFORMANCE

- 20.9-144.1 Mbh heating
- 002-012 sizes
- 0.5-10.0 kW elect. heat
- 200-1,200 cfm
- 80% higher efficiencies

FEATURES

- > 100+ factory valve & piping packages
- > 2, 3 & 4-row primary coils options
- > Energy-saving EC fan motors
- > ASHRAE 62.1-2010 compliant
- > Electric heat options

MODELS FCH*/FCV*/FHV*/FHW*/FHH*

HORIZONTAL/VERTICAL THINLINE FAN COILS

ThinLine horizontal units offer space savings for single-zone applications in new or retrofit buildings, with extensive design and color choices allow them to blend into all types of building environments and decor.



MODEL FSG

PERFORMANCE

- ⚙️ R-6.5 thermal value
- ❄️ 003-012 sizes
- ⚙️ 9-38.2 Mbh
- 🌊 300-1,200 cfm
- 🔊 NC less than 30

FEATURES

- Smallest footprint in the industry
- 3 or 4-row primary heating coil
- Energy-saving EC fan motor
- Primary or auxiliary electric heat

VERTICAL STACKED OPTILINE® FAN COIL

With the smallest vertical stacked footprint in the industry, OptiLine is the ideal retrofit or new construction solution when livable and working space is at a premium.



VARIABLE AIR VOLUME (VAV)

SETTING THE STANDARD FOR QUALITY AND PERFORMANCE

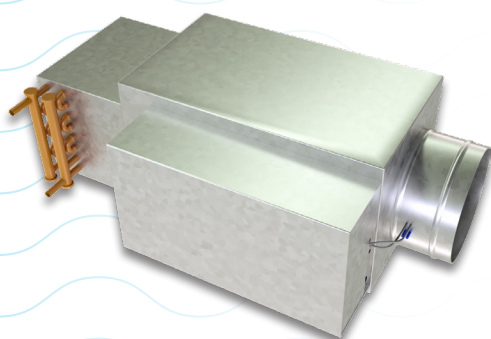
Daikin's single-duct VAV boxes provide high performance and set the standard in the industry for construction, performance and quality. Daikin fan-powered terminal units, available as parallel and series, provide operating cost savings through reduced central fan horsepower and through waste heat recovery.



MODELS MQTH15/MQFC16/MQFV15

SINGLE-DUCT & FAN TERMINAL UNITS

Single-duct terminal units regulate conditioned airflow into an occupied zone in response to a control signal. Fan-powered terminal units are typically used for heating and cooling perimeter zones.



PERFORMANCE

- Hot water/elect. heat
- 10 unit sizes
- 80-8,000 cfm
- Up to 3" w.g. static press.
- AHRI certified

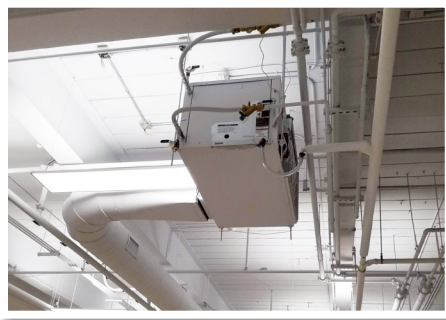
FEATURES

- > 2-pipe applications, up to 150 psig steam or 220 psig, 375°F water
- > 1/2" copper coils with aluminum fins
- > Horiz. louvers standard, vert. louvers optional
- > Intermittent or continuous fan operation
- > Standard PSC motors, overload protection
- > Baked-on textured paint

WATER SOURCE HEAT PUMPS

UNMATCHED PERFORMANCE AND OCCUPANT COMFORT

Daikin water source heat pump systems (WSHPs) are some of the most efficient, environmentally-friendly systems available for heating and cooling buildings. These high-efficiency, self-contained units are available in a variety of sizes/configurations and can be placed in virtually any location within a building.



NAME/MODEL:

SMARTSOURCE® CONSOLE

WSRC
Console



½-1-1/2 ton

SMARTSOURCE® VERTICAL

WSVF/WSVC
Vertical Stack



¾-3 ton

SMARTSOURCE® 3-TIER

WSCH/WSCV/WSDH/WSDV/WSMH/WSMV/
WSNH/WSNV/WSSH/WSSV/WSTH/WSTV
Horiz. & Vert./Single & Dual Stage Comp.



½-6 ton

SMARTSOURCE® LG. CAPACITY

WSLH/WSLV
Horizontal & Vertical/Dual Comp.



6-25 ton



Tons 0 5 10 15 20 25



APPLICATIONS

- ▶ HOSPITALITY
- ▶ RETAIL
- ▶ HEALTHCARE
- ▶ SCHOOLS
- ▶ OFFICES

MODEL WSRC

CONSOLE SMARTSOURCE®

Console units combine slope-top or flat-top cabinet design, high-sill or low-sill configuration, and a variety of color selections and options that allow greater flexibility to design, install, operate and maintain an optimum WSHP system.



PERFORMANCE

- 7000-18,000 nom. cooling
- ½-1½ tons
- 007-018 sizes
- Up to 5.8 COP
- Up to 19.4 EER

FEATURES

- > Flat/slope top & low/high sill flexibility
- > MicroTech® & wireless temperature controls
- > Outdoor air dampers & 2-way valve packages
- > Decor-matching colors & textured finishes
- > LED status indicators

PERFORMANCE

- R-6.5 thermal value
- 009-036 sizes
- ¾-3 tons
- 300-1,200 cfm
- Up to 19.3 EER

FEATURES

- > Hydronic heat & geothermal options
- > Efficient, quiet EC fan motors
- > MERV 8 or 13 filtration options
- > Motorized outdoor air damper

MODELS WSVF/WSVC

VERTICAL STACK SMARTSOURCE

SmartSource vertical stack water source heat pumps with low global warming potential (GWP) R-32 refrigerant are designed as cost-saving, multi-floor solutions. These efficient and quiet units install and connect quickly in floor-to-floor applications, drastically saving building owners on labor expenses.



MODELS WSCH/WSCV/WSDH/WSDV/ WSMH/WSMV/WSNH/WSNV/WSSH/WSSV/ WSTH/WSTV

3-TIER SMARTSOURCE®

SmartSource's 3-tier (Compact, Plus, Premium) horizontal and vertical offerings combine industry-leading efficiencies with low-noise operation, high indoor air quality and consistent leaving air temperatures for unmatched WSHP performance.

PERFORMANCE

-  7,000-70,000 nom. cooling
-  007-070 sizes
-  ½-6 tons
-  250-2,300 cfm
-  Up to 23.7 EER

FEATURES

- > Efficient single or dual-stage compressor
- > EC fan motors with adjustable air flow
- > Smart Dehumidification, precise humidity control
- > MERV-8/MERV-13 filters
- > Energy-saving economizer



MODELS WSLV/WSLH

LARGE CAPACITY SMARTSOURCE®

Large capacity vertical and horizontal units are easily adaptable to fit in small equipment rooms or in floor-by-floor installations. They can be applied to all building types where it is advantageous to extend the water source heat pump concept to larger or core areas.



PERFORMANCE

-  R-6.5 thermal value
-  6-25 tons
-  072-300 sizes
-  1,800-12,500 cfm
-  Up to 19.4 EER

FEATURES

- > Standard or geothermal configurations
- > Superior G-60 galvanized steel cabinetry
- > Superior IAQ and quiet operation
- > Waterside economizer and MERV filter options
- > External supply/return pipe connections

UNIT VENTILATORS

REDUCING COST WHILE MATCHING COMFORT

Unit ventilators minimize energy usage by utilizing a two-stage compressor and multi-speed fan to better match changing room loads. They leverage “free” cooling opportunities to reduce operating costs. During unoccupied periods and at night, units operate sparingly to conserve energy.



APPLICATIONS

- ▶ SCHOOLS
- ▶ OFFICE BUILDINGS
- ▶ HEALTHCARE
- ▶ RETAIL
- ▶ HOSPITALITY

NAME/MODEL:

HEAT PUMP

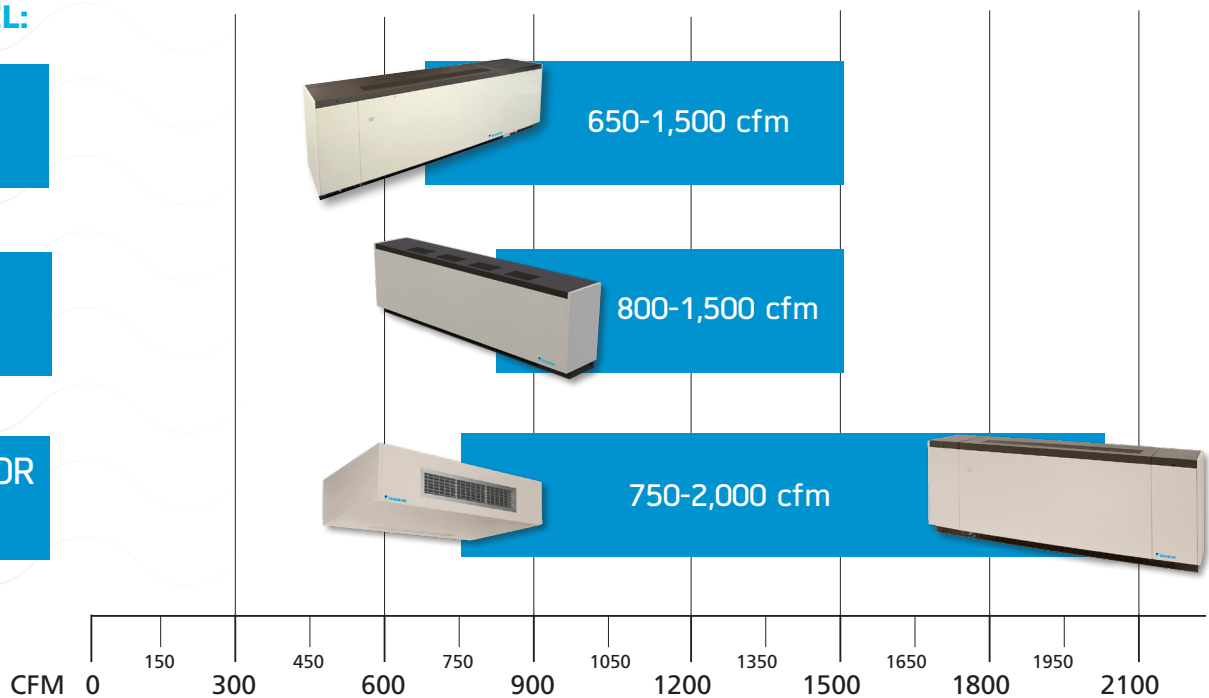
AEQ, ARQ, GRQ
Airsourse & Watersource

PACKAGED COOLING

AZQ, AZR, AZU
Airsourse

CEILING/FLOOR

AHF, AHB, AHV, AHR,
AVS, AVB, AVV, AVR
Horizontal & Vertical



MODELS AEQ/ARQ/GRQ

AIR/WATER/GEO-SOURCE HEAT PUMPS

Unit ventilator heat pumps provide efficient cooling, heating, ventilation and temperature control to create quality indoor air. Air-source units feature a heat pump for year-round comfort, water-source units incorporate heated or chilled water with a heat pump for reliable temperature control and geo-source units utilize geothermal energy with a heat pump for sustainable heating and cooling.



PERFORMANCE

- 17,900-51,100 Btuh
- 024-054 sizes
- 650-1,500 cfm
- Draw-through coils
- Up to 25.0 EER

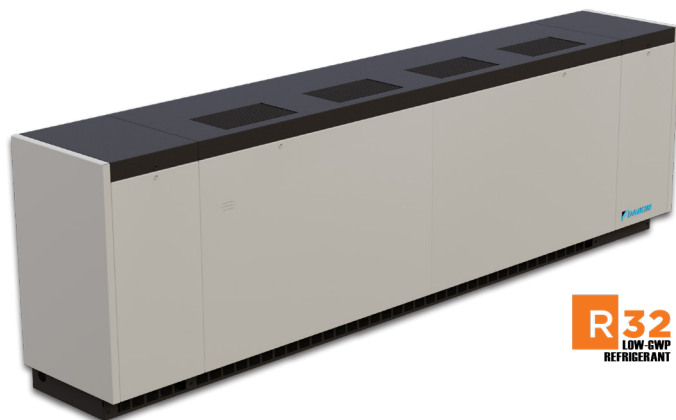
FEATURES

- > Dampers for superior temp./humidity control
- > Sustainable geothermal heat transfer
- > Easy integration of unit controllers by others
- > Free cooling economizer operation

MODELS AZQ/AZR/AZU

PACKAGE COOLING AIR SOURCE **CLASSROOM**

Classroom unit ventilators feature precise temperature and dehumidification control to help keep students and teachers comfortable while making maximum use of free outdoor-air cooling to reduce operating costs.



PERFORMANCE

- 19,300-51,100 Btuh
- 024-054 sizes
- 800-1,500 cfm
- Draw-through coils
- Up to 17.9 EER

FEATURES

- > Dampers for superior temp./humidity control
- > Easy integration of unit controllers by others
- > Heat transfer coil provides extra capacity
- > Hinged access doors for easy serviceability
- > Quiet fans/motor



MODELS AV*/AH*

VERTICAL/HORIZONTAL FLOOR/CEILING

Ceiling and floor units are perfect for new construction and for retrofit applications. Older buildings with baseboard radiant heat or other hydronic heating systems can be easily adapted to work efficiently with these units.



PERFORMANCE

-  15,700-57,600 Btuh
-  07-20 sizes
-  750-2,000 cfm
-  Draw-through coils
-  2-5 cooling rows

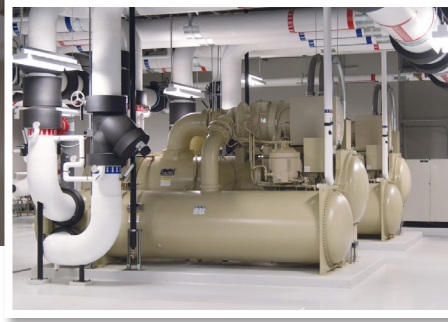
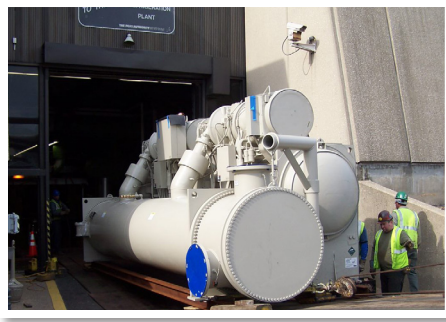
FEATURES

- > Bypass damper for temp./humidity control
- > R-32 VRV integrated option
- > Easy integration of unit controllers by others
- > Free cooling with economizer

WATER-COOLED CHILLERS

ENERGY SAVINGS BUILDING OWNERS DEMAND

Chillers make cold water or water/glycol fluid mixture to cool buildings or processes. A water-cooled chiller rejects absorbed heat from a building to an additional fluid loop that can then reject the heat through a secondary device such as a cooling tower or dry cooler.



APPLICATIONS

- ▶ HEALTHCARE
- ▶ OFFICE BUILDINGS
- ▶ EDUCATION
- ▶ MANUFACTURING
- ▶ DATA CENTERS

NAME/MODEL:

NAVIGATOR®

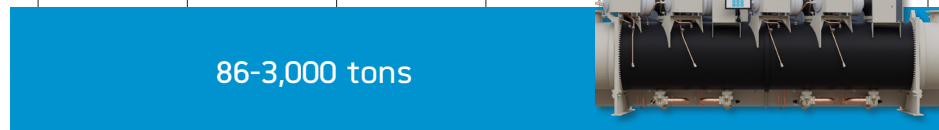
WWW/TWV
Screw compressor



100-300 tons

MAGNITUDE®

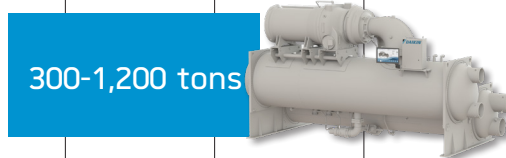
WMT/WMC/WME
Magnetic bearing compressor



86-3,000 tons

CENTRIFUGAL

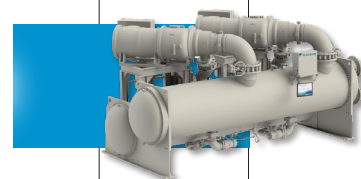
WSC/TSC/HSC
Single compressor



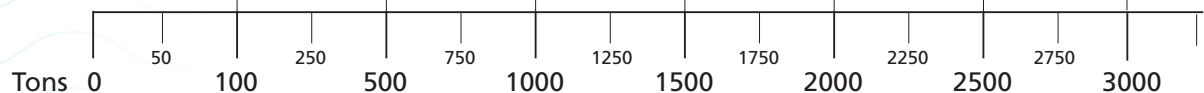
300-1,200 tons

CENTRIFUGAL

WDC/WCC
Dual compressor



1,700-2,500 tons



MODEL WWV/TWV

SCREW COMPRESSOR NAVIGATOR®

Navigator's Variable Volume Ratio (VVR®) screw compressor adjusts compression and volume ratio by sensing the lift needed to optimize performance, while the VFD modulates capacity. Model TWV heat pump reduces carbon footprint with electric heating and model WWV provides cooling with heat recovery.



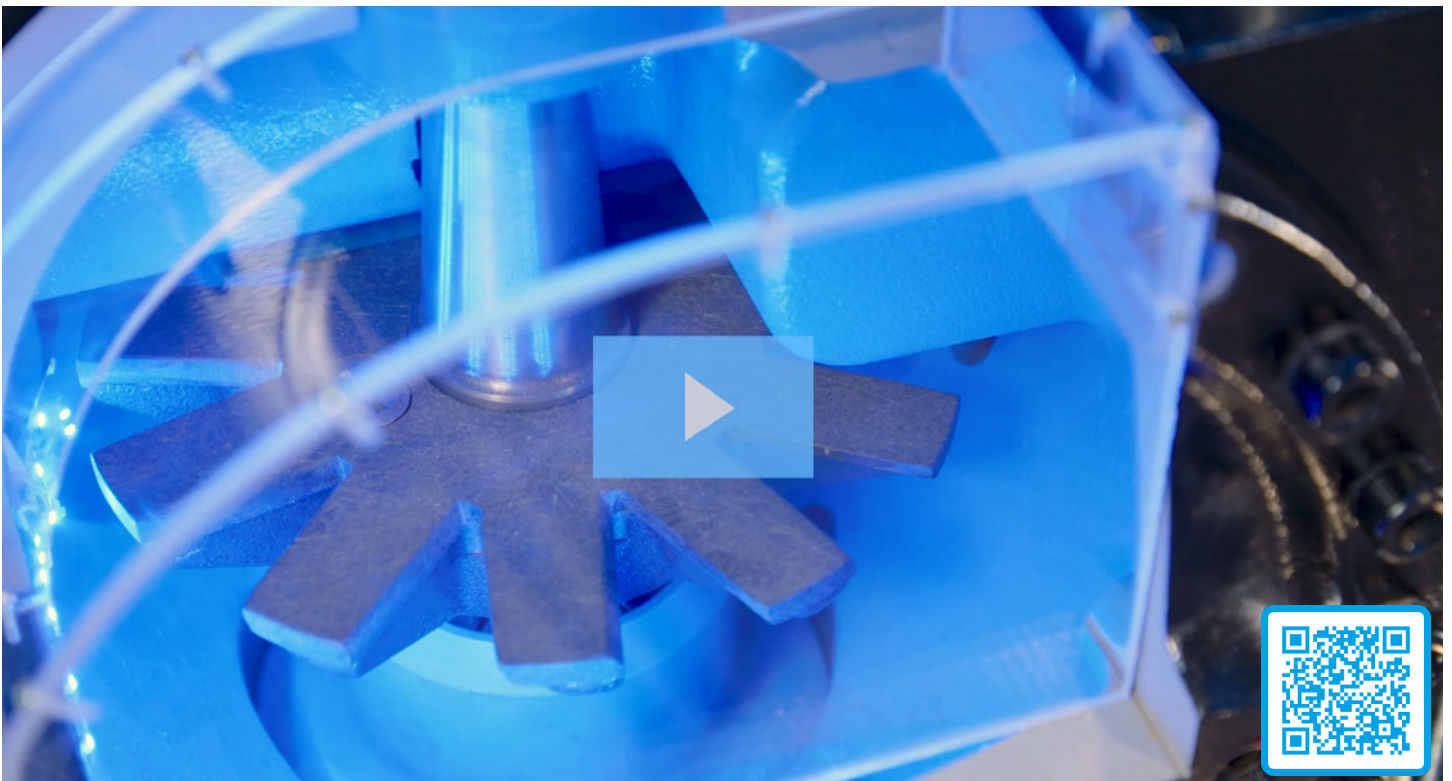
PERFORMANCE

- Low-GWP, A1 R-513A
- 100-300 tons cooling
1300-4400 MBH heating
- 82 dB(A) sound levels
- 0.61 kW/ton full load
0.38 kW/ton IPLV
- 35-second restart

FEATURES

- > 140°F condenser
LWT control
- > Electric heating/cooling
with heat recovery
- > Flexible BAS integration
- > RapidRestore® reduces
power loss impact
- > Unit mounted, air-cooled
variable frequency drive

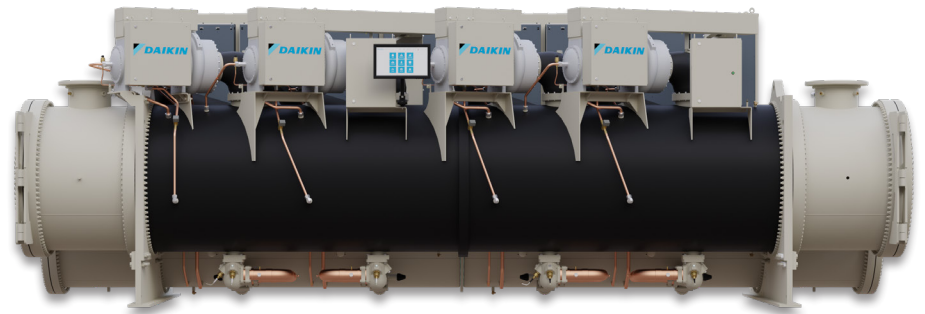
VVR® SCREW COMPRESSOR TECHNOLOGY








MODELS WMT/WMC/WME

MAGNETIC BEARING MAGNITUDE®

Magnitude centrifugal chillers are friction-and-oil-free, resulting in market-leading efficiencies and minimized maintenance. Its quiet operation, proven reliability and environmentally-friendly refrigerant choices give peace of mind. Heat recovery and heat pump capabilities further add to decarbonization efforts with electric heating and cooling operation.



PERFORMANCE

-  R-513A/R-515B/R-1233zd
-  86-3,000 tons cooling
3,600-5,300 MBH heating
-  75 dB(A) sound levels
-  0.48 kW/ton full load
0.30 kW/ton IPLV
-  Up to 142°F cond. LWT

FEATURES

- > Inverted duty, free-cooling operation
- > Seismic certification ensures uptime
- > Smallest footprint in the industry
- > Maximum uptime with RapidRestore® & Ride-Through® technology

MAGNETIC BEARING CHILLER TECHNOLOGY

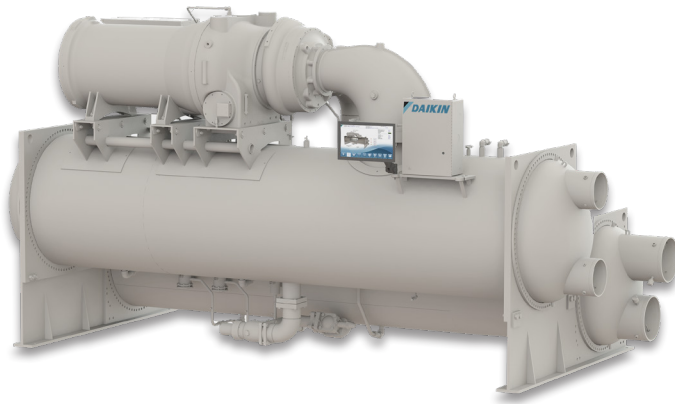
**40%
GREATER
EFFICIENCY**



MODELS WSC/TSC/HSC

SINGLE COMPRESSOR CENTRIFUGAL

Single compressor traditional centrifugal chillers balance first cost and performance for value-oriented customers. Flexible fixed speed or VFD starter options are available in low and medium voltages with unit mounted or free-standing configurations. Compact unit design allows for installation in tight areas.



PERFORMANCE

- Low-GWP, A1 R-513A
- 300-1,200 tons cooling
3,000-18,000 MBH heating
- 83 dB(A) sound levels

FEATURES

- > Compact footprint for constrained spaces
- > Knockdown disassembly options provide for easy & fast installation
- > Seismic certification ensures uptime
- > Templier heating control & cooling with heat recovery for sustainability

PERFORMANCE

- Low-GWP, A1 R-513A
- 1700-2,500 tons
- Unloading down to 10% capacity

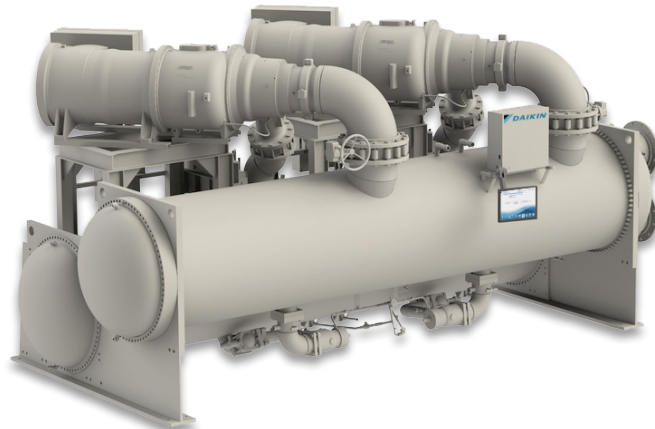
FEATURES

- > Maximizes capacity while minimizing footprint
- > Single or dual refrigerant circuits
- > Knockdown disassembly options provide for easy & fast installation
- > Seismic certification ensures uptime
- > Starter/drive voltage flexibility

MODELS WDC/WCC

DUAL COMPRESSOR CENTRIFUGAL

Dual compressor traditional centrifugal chillers offer redundancy and can produce 60% capacity even under a compressor failure. Paired with seismic certification, great efficiencies, large capacity range and flexible starters/voltages, these chiller systems are ideal for industrial facilities.



MODULAR SOLUTIONS

YOUR FAST TRACK TO HVAC SIMPLICITY

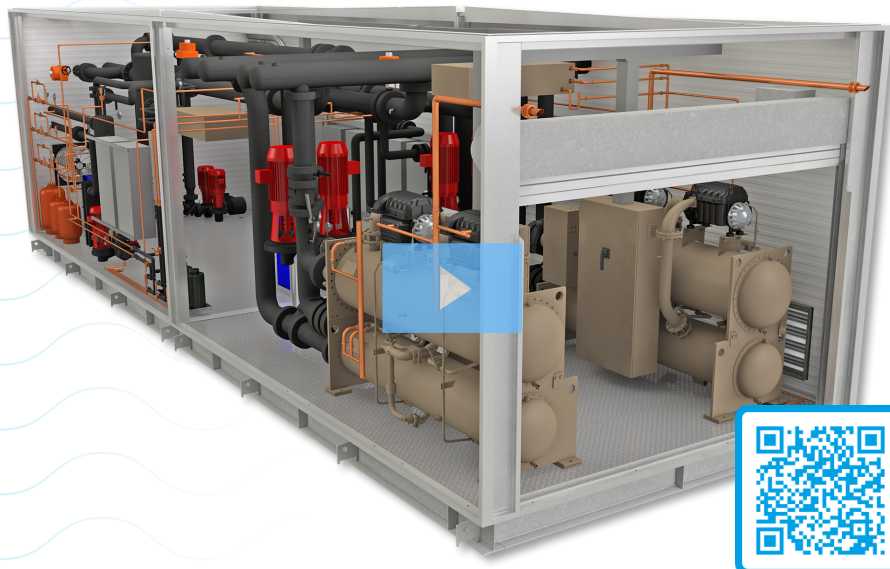
When time, space, and coordination challenges threaten your project, Modular Solutions deliver a fully integrated mechanical room – chillers, boilers, pumps, piping, electrical and controls – designed, built, and tested off-site for faster, cleaner installs and lower operational risks at startup.



MODEL MCP

MODULAR SOLUTIONS

Modular Central Plants (MCPs) are custom designed and fabricated in a dedicated production facility by a certified team for specific projects. Whether you're facing tight construction schedules, a challenging site or the need for future expandability, our MCPs are engineered to save time, reduce costs and eliminate jobsite headaches.



BENEFITS

- ✂ 100% turnkey
- ✂ Fits specific footprint
- 🕒 Meets fast-track jobs
- 💰 Lowest cost per ton
- 🔧 Custom engineered

SOLUTIONS

- Modular construction, easy walk-in access
- Complete management through delivery
- Simplified single-source responsibility
- Scalable for ongoing building expansions
- Custom design to match specific applications
- Fully assembled & tested at the factory
- Packaged mechanical system flexibility

AIR-COOLED CHILLERS

COMPLETE, ULTIMATE FLEXIBILITY

Chillers make cold water or water/glycol fluid mixture to cool buildings or processes. An air cooled chiller rejects heat absorbed from the building or process directly to the outdoor air using refrigerant to air coils and fans that blow outdoor air directly over those coils.



APPLICATIONS

- ▶ HEALTHCARE
- ▶ OFFICE BUILDINGS
- ▶ HIGHER EDUCATION
- ▶ HOSPITALITY
- ▶ DATA CENTERS

NAME/MODEL:

TRAILBLAZER®

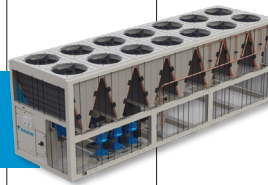
EWYQ/T Heat Pump
Scroll compressor



25 tons

TRAILBLAZER®

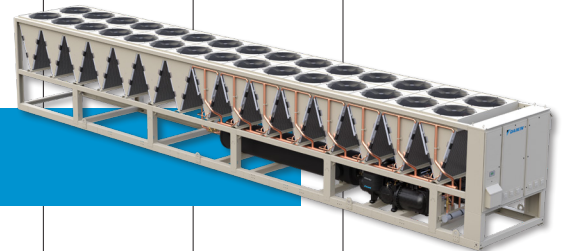
AGZ
Scroll compressor



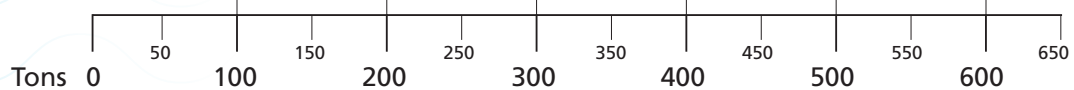
30-230 tons

PATHFINDER®

AWV
Screw compressor



100-565 tons



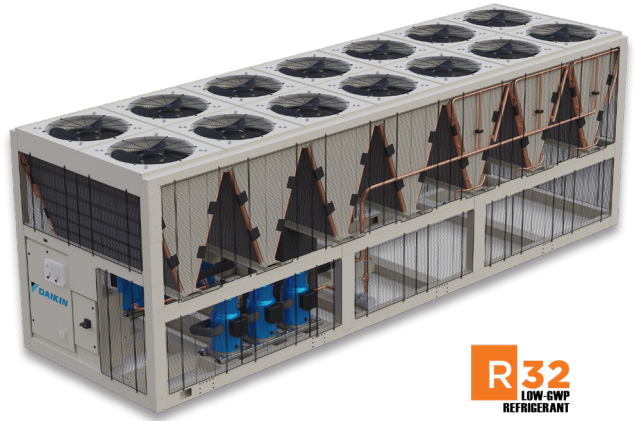
MODELS AGZ-F/EWYQ/EWYT

SCROLL COMPRESSOR TRAILBLAZER®

Trailblazer provides 10% more efficiency than leading competitors at design and off-design conditions. With a broad tonnage range and our new heat pump configuration, Trailblazer's scalability will fit your cooling needs while offering the best overall value in air-cooled packaged chillers.



EWYQ/T
HEAT PUMP!



R32
LOW-GWP
REFRIGERANT

PERFORMANCE

- Low-GWP R-32
- 30-230 tons (AGZ-F)
25 nom. tons (EWYQ/T)
- 100-810 kW
- 61 dBa sound level
- Up to 20.5 IPLV

FEATURES

- > Factory pump packages
- > RapidRestore® full power in <4 minutes
- > Easy BAS integration
- > Compact footprint
- > Heat pump models

MODEL AWW

SCREW COMPRESSOR PATHFINDER®

100% configurable, free-cooling Pathfinder chillers are HVAC industry's most efficient air-cooled chiller available and the first air-cooled screw chiller with IPLVs exceeding 22 EER. Pathfinder's array of features optimize sound, deliver the lowest turndown in flow and the highest leaving chilled water capabilities for facilities.



PERFORMANCE

- Low-GWP R-513A/R-515B
- 100-565 tons
- 350-1,985 kW
- Up to 60% more efficient
- +22 IPLV

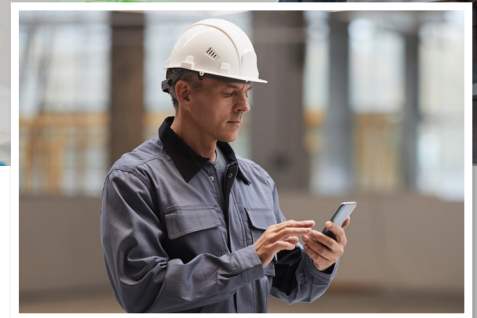
FEATURES

- > Variable volume ratio (VVR) technology
- > Factory-installed pumps
- > Integrated free cooling water-side economizer
- > RapidRestore® & Fast Loading technology
- > 100% fully configurable

SITELINE™ BUILDING CONTROLS

MAKING AUTOMATION SIMPLE

Whether you're overseeing a complex HVAC ecosystem of equipment and buildings or monitoring standalone units, SiteLine Building Controls and Service Solutions will help you create comfortable and sustainable environments where tenants work and live.



EQUIPMENT & BMS CONNECTIVITY

SiteLine's scalable, cloud-based equipment and building management systems (BMS) instantly and easily optimize performance of Daikin HVAC units and any HVAC ecosystem - including other manufacturers and existing building systems. Plus, our analytics provide effortless insight and optimization for energy, indoor air quality and sustainability.

BENEFITS

- Increases efficiency
- Improves operations
- Optimizes IAQ
- Measures carbon goals
- Keeps tenants cool

SOLUTIONS

- Preventive alerts and advanced security
- Scalable/flexible for equipment & buildings
- Remote monitoring from any device, anywhere
- 24/7 monitoring of hundreds of data points
- Automatic updates to latest technologies



Learn more and find your local dealer at DaikinApplied.com



BETTER IAQ STARTS HERE

ROOFTOPS | HEAT PUMPS | CONDENSING SYSTEMS | COILS
SELF-CONTAINED | BUILDING CONTROLS | AIR HANDLERS
UNIT HEATERS/FAN COILS | VARIABLE AIR VOLUME
WATER SOURCE HEAT PUMPS | UNIT VENTILATORS
WATER-COOLED CHILLERS | MODULAR SOLUTIONS
AIR-COOLED CHILLERS



13600 INDUSTRIAL PARK BLVD. | MINNEAPOLIS, MN 55441
1-800-432-1342 | 763-553-5330

LEARN MORE AT
DAIKINAPPLIED.COM